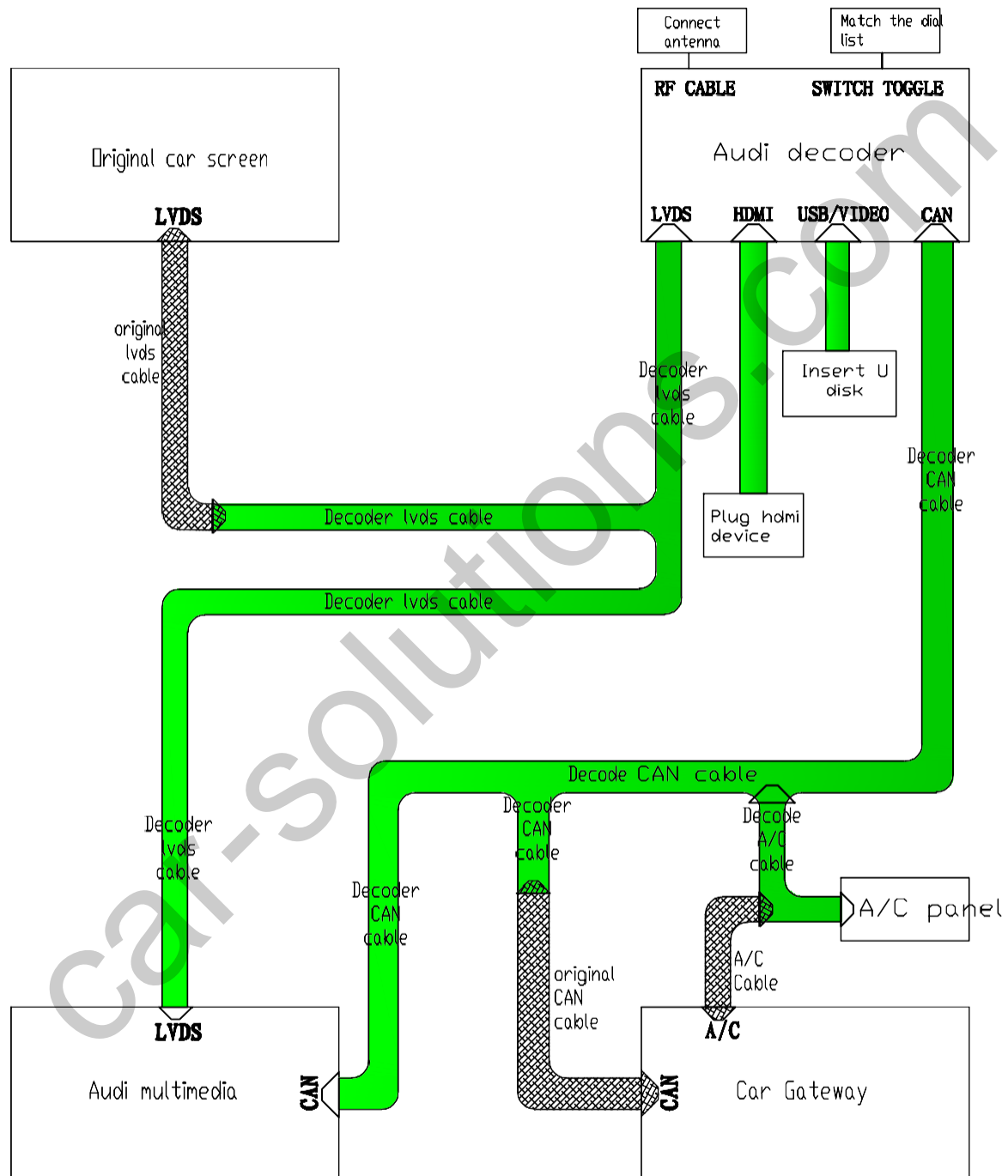
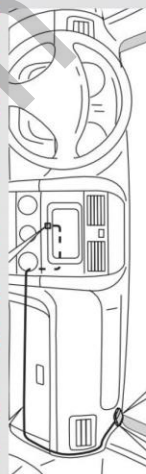


# Audi decoder wiring diagram



 This icon indicates the original car male socket

 This icon indicates the decoder male socket



Paste this antenna to dashboard where is plastic

Connect to original LVDS cable removed from head unit radio

Connect to original LVDS input in head unit radio

Reverse detect cable(only connect if car is manual transmission or connecting aftermarket 360° camera

Power cable in aftermarket rear camera

Video input for aftermarket front camera / DVR

Video input for aftermarket rear camera

USB input

Connect to cable that removed from A/C control panel

Connect to input of A/C control panel

Connect to original power cable removed from head unit radio

Connect to power input of head unit radio

External Microphone

Connect to head unit (check diagram on next page to connect)



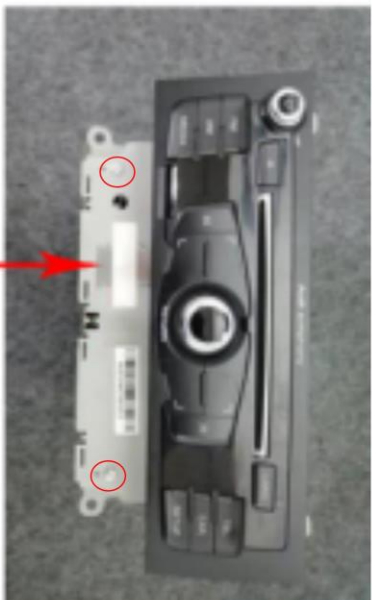
Press the buckle and take it up



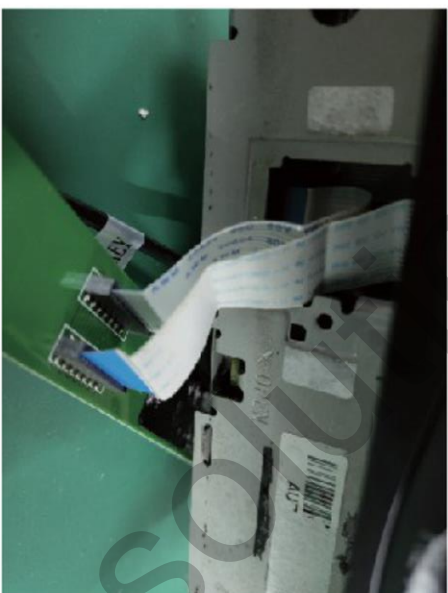
Insert the ribbon cable



Insert the cable to the small input in the PCB



Remove the screws and open the metal plate on the head unit radio



Unplug the ribbon cable in head unit radio and insert it to another input of the PCB; Insert the new ribbon cable to the input in head unit radio



Fix the PCB to head unit radio

### Box DIP switch setting

After wiring, check whether the yellow and green lights or red lights on both sides of the box are on, and then set switches on the box by below chart.

No.	Car model	DIP switch 1 to 6 setting (0 means OFF, 1 means ON)
1	Q5 With 3GMMI+(2013-2018) S4/S5/A4/A5 With 3gmmi(2012-2015) A4L With 3GMMI(2016)	000000
2	S4/S5/A4/A5 With 3GMMI(2012-2016)	000000
3	Q5 With 3GMMI ( 2010-2012 )	000111
4	S4/S5/A4/A5 3GMMI(2010-2011)	000111
5	S6/S7/A6/A7 3GMMI(2012-2016)	000000
6	A8/A8I ( 2012-2018 )	000001
7	S6/A6 3GMMI (C6)(2010-2011)	001101
8	Q7(2010-2015)	000010
9	Q3 Not Navigation 6.3inch(2014-2018 ) A1 6.3inch	001100
10	S6/S7/A6/A7 ( 3GMMI Rotary Knob, MIB2 Connector ) (2016-2018)	001111
11	S3/A3 6.3inch(2014-2016)	110011
12	B9/A4L(MIB2)7inch(2014-2019) S5/A5 7inch(2014-2019)	110100
13	S3/A3 6.3inch(2017-2018)	110110
14	S3/A3 7inch(2017-2018) Q2L 7inch(2019)	111000
15	S3/A3 7inch(2014-2016)	111001
16	Q7(2016-2018) Q5L MIB2 7inch (2018-2019)	111011
17	Q5/A5/A4 LOW 6.3inch(2010-2018)	000101
18	A4L/A5 /18-19 A4 8.3inch ( 2014-2019 )	110100
19	Q7 8.3inch ( 2016-2019 )	
20	A3 ( 2019 ) Q2L 8.3inch ( 2017-2018 )	111000
21	Q5L 8.3inch ( 2018-2019 )	111011
23	Switch 7: if car has Parking radar, set switch 7 to OFF, otherwise set it to ON	
24	Switch 8: if car has original Bluetooth, set switch 8 to OFF, otherwise set it to ON	

After DIP switch setting, please check whether the original system can be operated. If not, please check whether the switch setting and power cable are properly connected.

### How to enter and exit the box system menu?

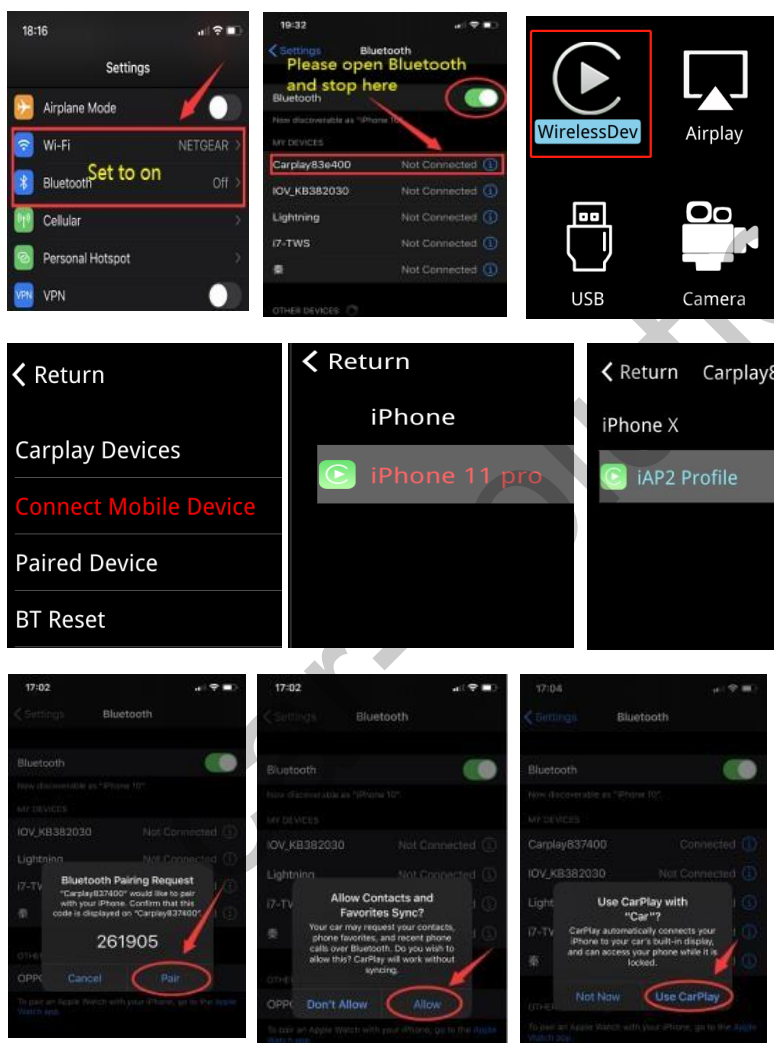
Press the NAV or Media or Info button for 2 to 3 seconds to enter and exit box system menu





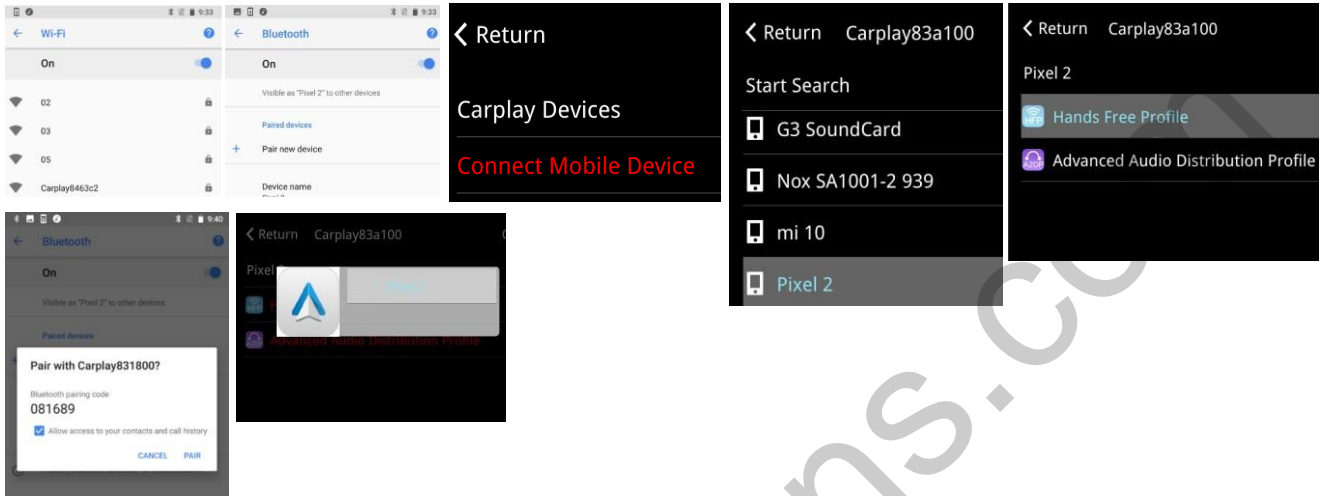
## Steps to connect wireless CarPlay

- Power on the car and enter the box system menu
- Turn on Wi-Fi on the phone
- Turn on Bluetooth on the phone and stay in the Bluetooth interface
- Turn on WirelessDev menu on screen
- Click menu connect mobile device, click start search, choose your iPhone and iAP2 profile
- Click Pair on the phone, and then click Allow and User CarPlay on the phone.



### Steps to connect wireless Android Auto

- Power on the car and enter the box system menu
- Turn on Wi-Fi on the phone
- Turn on Bluetooth on the phone and stay in the Bluetooth interface
- Turn on WirelessDev menu on screen
- Click menu connect mobile device, click start search, choose your phone, click either "Hands Free Profile" or "Advanced Audio Distribution Profile"
- Click pair on the phone. Click OK to use.



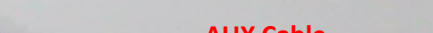
### How to get sound in CarPlay or Android Auto?

- If there is optical cable (normally two yellow cable) in original radio power plug, move it to corresponding position in new power plug.



- Go to original media source menu to select AUX as audio source first, it will have sound after that.





If your car is automatic transmission, connect aftermarket rear camera by below diagram.



This red cable connect to yellow 12v reverse cable

Connect to red power cable of camera

Black cable connects to negative of reversing light

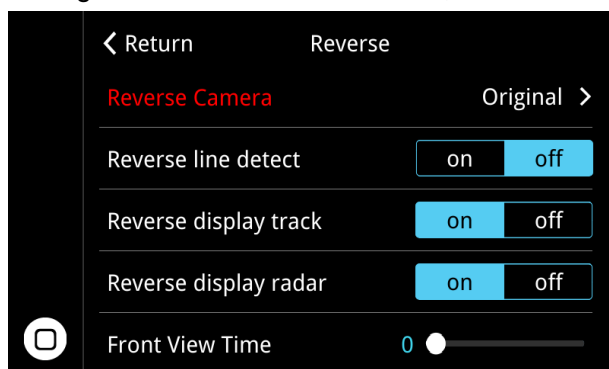
Join the two red cables and connect to positive of reversing light

Red cable connects to purple cable(label Reverse)

## Camera setting

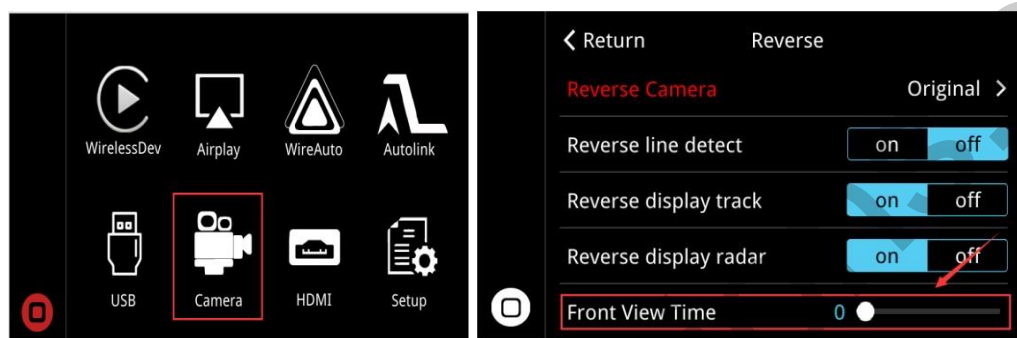
### Rear camera

If your car is with original factory rear camera, go to menu Setup>Reverse>Reverse Camera, set reverse camera to Original. If camera is aftermarket, set it to Aftermarket.



### Front camera

If you connect one front camera, you can click the Camera menu to check front camera image or you can set front view time to check front camera image.



After connection, please play music, press the voice on the steering wheel to add or subtract/up and down switch/phone key/language key/long press the knob to confirm the test!

Number	The key function original in the car	The key function in the CarPlay active adapter
1	Voice "+" key	The same as the original function
2	Acoustic control key	Hold for 3 sec to call Siri
3	Voice "-" key	The same as the original function
4	TEL key	The same as the original function

### Key function introduction

- (1) control sound volume: add or subtract the sound button
- (2) previous song/next song: up and down switch key
- (3) answer/hang up: phone button



(4) call out the phone book: press the phone button

(5) wake up apple's Siri voice assistant: long press the voice button/knob to confirm the call out in 3 seconds

### **How to update firmware?**

#### **System update steps**

- Copy the file "ISPBOOOT.BIN" to root directory of USB flash sticker
- Connect the USB flash sticker to USB cable of the box
- Enter the box system menu, click Setup menu
- Click software update, input code 2863 to enter
- Click system update, it pops to ask whether to update, click "√" to update
- Wait about 3 minutes for the update to finish, do not power off during update
- When update complete, the screen will return to original menu

#### **MCU update steps**

- Copy the file "Upgrade.BIN" to root directory of USB flash sticker
- Connect the USB flash sticker to USB cable of the box
- Enter the box system menu, click Setup menu
- Click software update, input code 2863 to enter
- Click MCU update, it pops to ask whether to update, click "√" to update
- Wait about 1 minutes for the update to finish, do not power off during update
- When update complete, the screen will return to original menu